

# AGRITEC

technology

meets

nature

PRICE LIST 2015/2016



## **AGRITEC** GmbH

Gersdorferstraße 1-5 D-68804 Altlußheim

tel +49 (0) 6205-3949-810 fax 3949-849

agritec@agritec.de

www.agritec.de

---

Data-, Construction- and Prices are subject to change without notice.

**AGRITEC GmbH** Gersdorferstraße 1-5 68804 Altlußheim (Germany) tel + 49 (0) 6205-3949-810 fax 3949-849 agritec.de [agritec@agritec.de](mailto:agritec@agritec.de)

Machine name	Machine typ	Page
<b>Laying out</b>		
AGRITEC rotary tiller	AT20/AT30	
AGRITEC rotary tiller, stone burier	UO40	
<b>Cultivate</b>		
AGRITEC flail mower	GS33	
AGRITEC flail mower	GS40	
AGRITEC flail mower for extensive mowers	GS33/GS40	
AGRITEC flail mower with hydraulic actuator	GS33/GS40	
AGRITEC flail mower with DLG Stone test	GS40AD	
AGRITEC flail mower	GS50	
AGRITEC flail mower with hydraulic actuator	GS50	
AGRITEC flail mower with DLG Stone test	GS50	
AGRITEC heavy-duty flail mower	G60/GS70	
AGRITEC lateral flail mower AGRITEC lateral rear flail mower	GS40S GS40P GS50P	
AGRITEC embarkment mower	BC/BM/BS/BK	
AGRITEC flail mower with suction technology	GA 40 – 140/160	
<b>REGENERATION</b>		
AGRITEC scarifier	ST40	
<b>SHOCKex</b>		
AGRITEC SHOCKex, top link shock absorber	N-23-0XX-0-XX0	<b>NEW!</b>
<b>SPARE PARTS</b>		
Original AGRITEC spare parts		

Data-, Construction- and Prices are subject to change without notice.

## Company profile WAM GmbH and **AGRITEC GmbH**

Since 2015 **AGRITEC**, is an independent manufacturer and trading company. The roots go back to 1985, when it was a part of the internationally operating group of companies WAMGROUP. In 1985 **AGRITEC** started with the development, manufacturing and distribution of devices for carrier vehicles for the laying out, cultivation and regeneration of green spaces as a department within WAMGROUP Italy.

In 1994 WAM GmbH Germany took over the distribution of **AGRITEC** products for Germany, Austria, France and Switzerland. The company WAM GmbH Germany is a part of the internationally operating group of companies WAMGROUP. The company is located in D-68804 Altlußheim (Germany) in the triangle of Mannheim - Heidelberg - Karlsruhe on an area of over 14.500 m<sup>2</sup>. 5,500 m<sup>2</sup> of the area stand for office buildings, factory and logistics center. The product range includes machines and components for the bulk handling of the manufacturing companies of the whole WAMGROUP group companies. Permanent research and development form a wide product range. This is the foundation for customer-specific solutions made of standard components.

Since 1998 WAM GmbH is responsible for the entire export. 1999 WAM GmbH Germany took over the responsibility for the complete **AGRITEC** development, production, sales and service, also of the complete **AGRITEC** product line. Since 1998 **AGRITEC** is a German manufacturer.

**AGRITEC** offers modern products and accessories for the laying out, cultivation and regeneration of private and also municipal green areas for service providers, municipalities and machine dealer.

The pursuit of **AGRITEC** is to act out of a strong market and to expand the product range continuously. **AGRITEC** expand sales to other countries. For **AGRITEC** a close cooperation with renowned tractor and carrier vehicle manufacturers is considered to be particularly important. In cooperation with this manufacturers and the **AGRITEC** construction department the ideal customer solution is to be constructed. In the end the best solution for the customer needs will be engineered. Finally, the Product will be measured, weighted and approved in the **AGRITEC** test center.

Close contact to our reseller by device demonstrations, internal trainings, the supply of both sales aids and various trade fairs have become the hallmark of **AGRITEC**.

The product line of **AGRITEC** is manufactured in an efficient and optimized work processes meeting high quality standards, aligned with the needs of the customers and all processes throughout the product life cycle are driven by the market's requirements.

**AGRITEC** GmbH has expanded its market position over the years and is still on a strong growth path continuously.

## Purchase of farming equipment is a matter of trust Experience and competence from **AGRITEC**

- Since 1985 experience in the field of machines for open space maintenance
- AGRITEC** is manufacturer of attachments for green space maintenance
- Standard and Customized Production in 68804 Altlußheim – Germany
- Attachments for PTO and hydraulic drives of carrier vehicles
- AGRITEC** GmbH is a part of WAM GROUP
- Distribution only through retailers
- Research and Development Department at the site of the company
- Support and Service Center at the site of the company
- Test Labs at site of the company
- Warehouse at the site of the company
- Short delivery times for standard machines
- Short delivery times for wear and spare parts
- Company Survey and Customer Partnership Audit in 68804 Altlußheim
- Wide range of device for carrier vehicles from 12 to 200HP

Device for **creating** green spaces

Soil Millers, reverse milling

Device for the **cultivation** of green spaces

flail mower / mulcher, slope mower

Device for the **regeneration** of green spaces

sowing machines, scarifiers

- Wide range of products with a variety of different working widths and versions
- Construction and adjustments to carrier vehicles
- Attachments for PTO and hydraulic drives of carrier vehicles
- Demonstration machines equipment pool
- AGRITEC** attachments could be shown at your customers place
- Purchase at the field test
- Support for your company in regional trade fairs and house exhibitions
- Product training for your sales consultants, technicians and workshop staff

---

Data-, Construction- and Prices are subject to change without notice.

**AGRITEC GmbH** Gersdorferstraße 1-5 68804 Altlußheim (Germany) tel + 49 (0) 6205-3949-810 fax 3949-849 agritec.de [agritec@agritec.de](mailto:agritec@agritec.de)

## Impressions from Altlußheim



Data-, Construction- and Prices are subject to change without notice.

**AGRITEC GmbH** Gersdorferstraße 1-5 68804 Altlußheim (Germany) tel + 49 (0) 6205-3949-810 fax 3949-849 agritec.de [agritec@agritec.de](mailto:agritec@agritec.de)

## AGRITEC SHOCKex

### Spring Assisted Top Link Shock Absorber

The new **AGRITEC SHOCKex** is a spring-loaded system for absorbing bad vibes, vibrations or succussions.

**SHOCKex** can replace conventional inflexible top links, which transfer shocks, strikes or mechanical force directly to the machine. Generally rigid hangers stress bearings, connection points, material and the machine. This stress leads to increased wear, material failure and premature breakdown.

**SHOCKex** is a spring-assisted absorber system, which protects mounting parts, bearings, and the tractor including the implement. Thereby all components will be prevented of damage. The traceability of the carrier vehicle will be substantially better. Safety, roadworthiness and material protection will increase significantly. That effects also an increase of the lifetime of carrier vehicle and working machine.



Adjustable Cross shows to the top

### How to find the right model and characteristics

- MODEL depends on the acting force, TYPE depends on length and connection
- Preloaded springs for precise working without swinging
- Mounting length setting with adjustable cross
- Optical warning at spindle-thread ensures thread-overlapping
- Overload protection. When overloaded **SHOCKex** becomes inflexible but it will be stable.
- THE REAL LOAD of **SHOCKex** depends on the following parameters:
  - Weight of implement
  - Distance of Carrier Vehicle and Implement (leverage force)
  - Connecting Situation (Angle of top link)
- MORE INFORMATION about <How to find the suitable model> under [www.AGRITEC.de](http://www.AGRITEC.de)

### Models of SHOCKex

Model	Implement Weight (circa*)		Load Range Force (N)		Model / Type Combi				Price				Remark
	from*	to*	minimal	maximal	510	640	790	other	510	640	790	other	
N-23-010-0	100 kg*	200 kg*	2150*	3950*	X	X	X	O	454 €	454 €	454 €	O	launch 2016
N-23-011-0	150 kg*	310 kg*	3000*	6200*	X	X	X	O	460 €	460 €	460 €	O	launch 2016
N-23-012-0	260 kg*	500 kg*	5340*	10000*	X	X	X	O	468 €	468 €	468 €	O	launch 2016

X= Available O= On Request \*- More information to find the exact load range under [www.AGRITEC.de](http://www.AGRITEC.de)

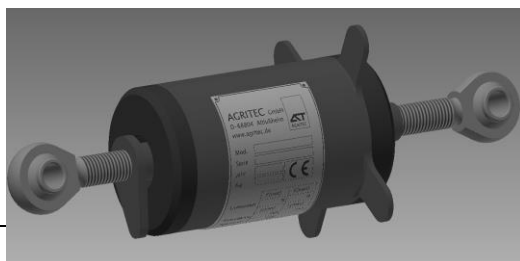
### TYPES of SHOCKex - Monting Distance, Type- / Model-Combination and Connection

TYPE	Mounting Length (Cat.1)		suits to Modell N-23-....				Connection				Remark
	minimal	maximal	-010-0	-011-0	-012-0	other	Cat.1	Cat. 1N	Cat.2	other	
510	410 mm	L 610 mm	X	X	X	O	X	X	O	O	launch 2016
640	520 mm	L 760 mm	X	X	X	O	X	X	O	O	launch 2016
790	670 mm	L 910 mm	X	X	X	O	X	X	O	O	launch 2016

L= length adjustable by rotary handle

X= Available

O= On request



AGRITEC GmbH Gersdorferstraße 1-5 68804 Altlußheim (Germany) tel + 49 (0) 6205-3949-810 fax 3949-849 agritec.de [agritec@agritec.de](mailto:agritec@agritec.de)

laying out • cultivate • regeneration



AGRITEC GmbH

Gersdorfer Straße 1-5 D - 68804 Altlußheim  
tel +49 6205 3949-810 fax +49 6205 3949-849  
www.agritec.de agritec@agritec.de